



ESTATE REPORT SAMPLE ANNUAL REPORT 2017

PREPARED BY

Agritix

Table of Contents

- Estate Overview
- Land Use Analysis
- Roads and Accessibility
- NDVI Index
- Estate Health Overview
- Estate Issues



Estate A

Area of interest: 10.53 hectares

Tree stand: 1081 trees

Palm Age: 7 - 20 years

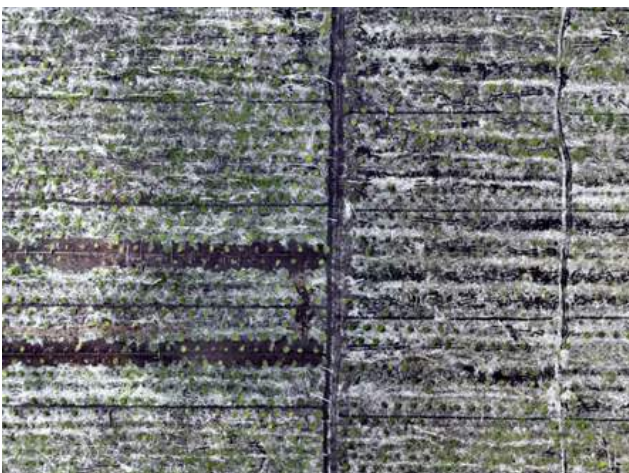


Estate B

Area of interest: 53.82 hectares

Tree stand: 6171 trees

Palm Age: 4 - 15 years



Estate

C

Area of interest: 13.82 hectares

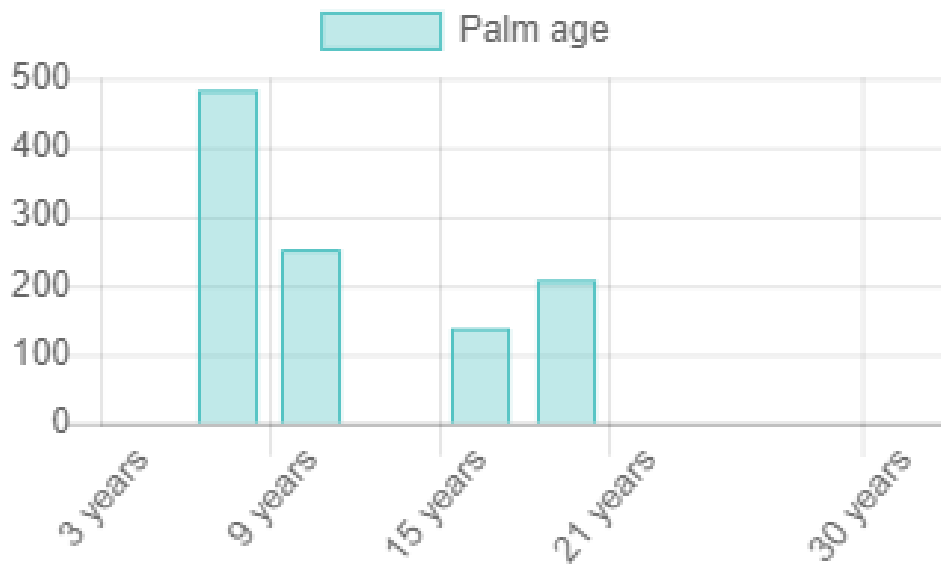
Tree stand: 1051 trees

Palm Age: 3 - 5 years

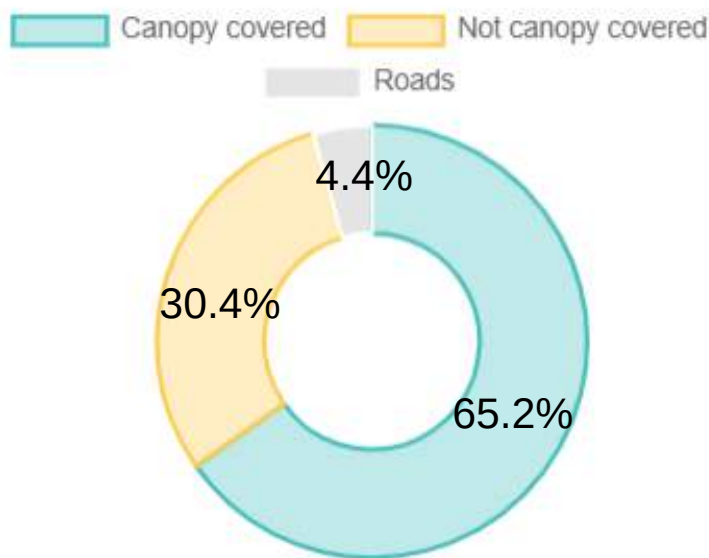


Area of interest:	10.53 hectares
Terrain type:	Hilly
Tree stand:	1081 trees
Tree density:	103 trees/hectares Tree density is very low
Tree canopy area:	63.55 meters square
Land canopy coverage:	6.87 hectares (65.2%) Land is underused

Palm Age Distribution



Land Use Breakdown



Canopy covered:	65.2% (6.86 hectares) (-0.4%)
Roads:	4.4% (0.46 hectares) (+1.1%)
Not covered:	30.4% (3.20 hectares) (-0.7%)

Potential of 300 (30%) more trees plantable in the uncovered 3.20 hectares.



Length of Trunk Road:
306m

Length of Branch
Road: 327m

Road Length per
Hectare: 60.11m

Road length per hectare is below recommended minimum of 120m per hectare

Number of Trees within 0 - 30m from Road: 372 (34%) (+5.5%)

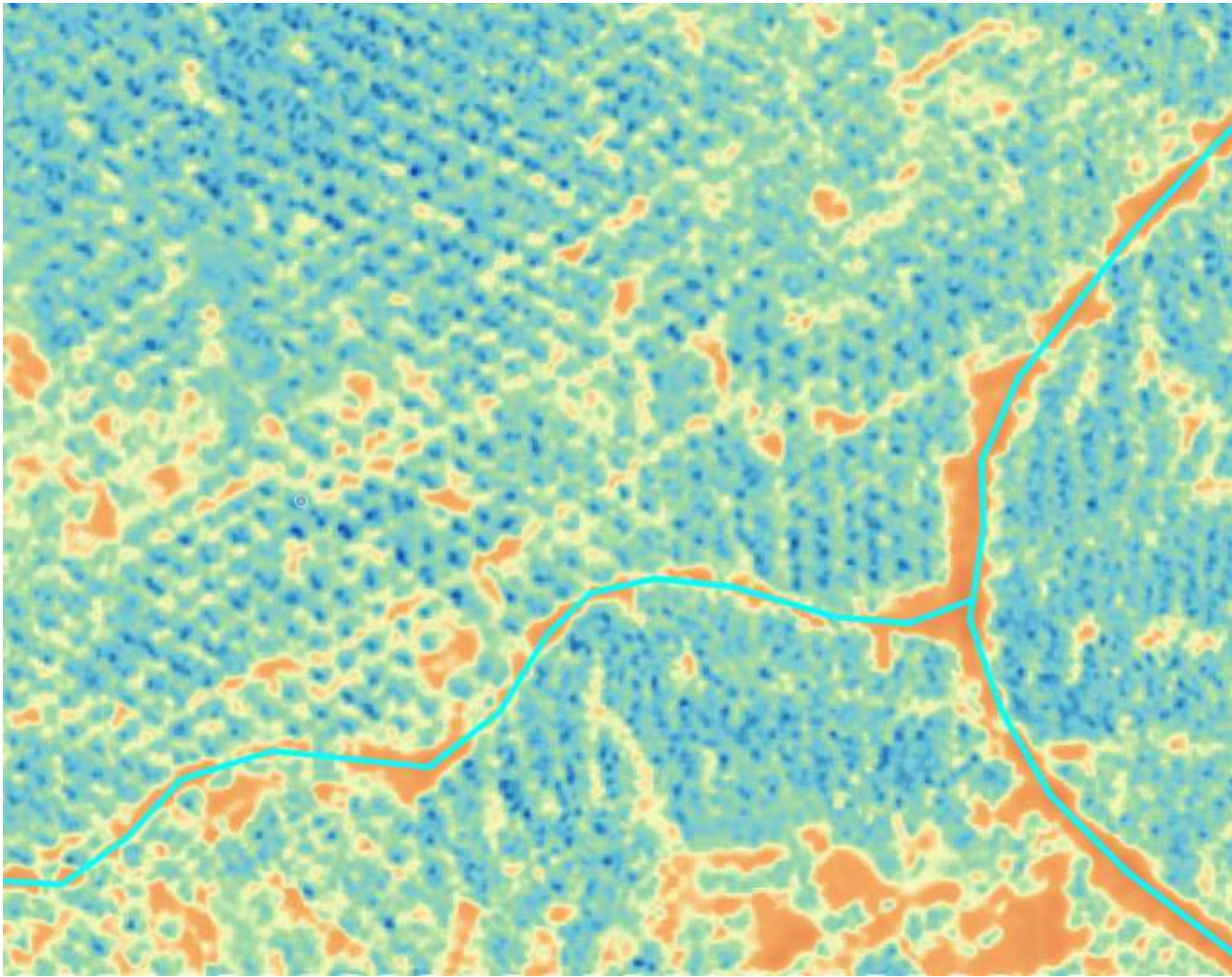
Number of Trees within 30 - 60m from Road: 341 (32%) (+4.7%)

Number of Trees within 60 - 90m from Road: 156 (14%) (-2.5%)

Number of Trees further than 90m from Road: 212 (20%) (-6.4%)

Road coverage has improved compared to 2016, but some trees are still too far from roads and difficult to access

NDVI index



- (1) 3.5% (38) palms are very unhealthy (below 15% health).
- (2) 15.8% (171) palms are of below average health (below 30% health).
- (3) 80.7% (872) palms were of no concern (above 30% health).

Health Index and Health Change

No Concern (Above 30% health)		
Estate	Number of palms (2017)	Change (vs 2016)
A	872 (80.7%)	+56 (5.2%)
B	5702 (92.4%)	+194 (3.1%)
C	770 (73.3%)	-62 (5.9%)

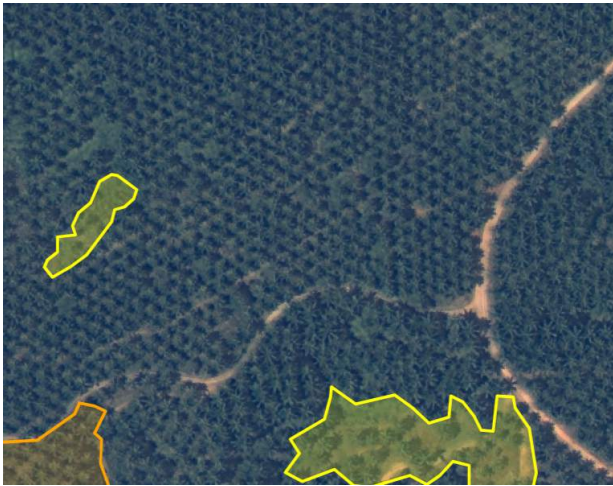
Unhealthy (Between 15% to 30% health)		
Estate	Number of palms (2017)	Change (vs 2016)
A	171 (15.8%)	-27 (2.5%)
B	310 (5.0%)	-136 (2.2%)
C	236 (22.4%)	+40 (3.8%)

Very Unhealthy (Below 15% health)		
Estate	Number of palms (2017)	Change (vs 2016)
A	38 (3.5%)	-29 (2.7%)
B	159 (2.6%)	+22 (2.1%)
C	45 (4.3%)	-58 (0.9%)

Dead Trees in a Year

Estate	Number of palms (2017)	Change (vs 2016)
A	1081	-5 (0.46%)
B	6171	-42 (0.68%)
C	1051	-11 (1.04%)

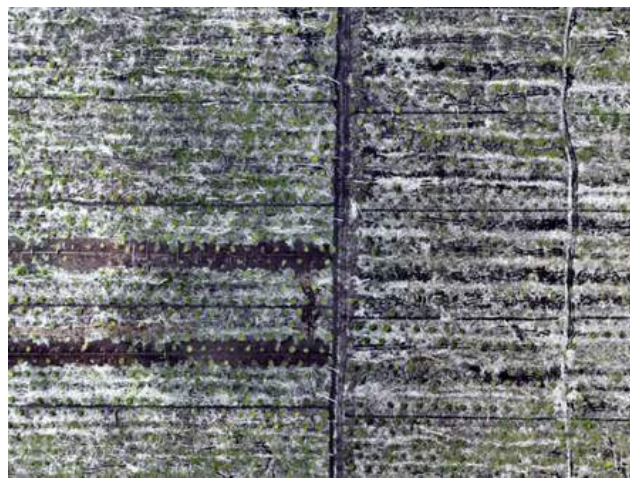
Issues detected from satellite image



Estate A

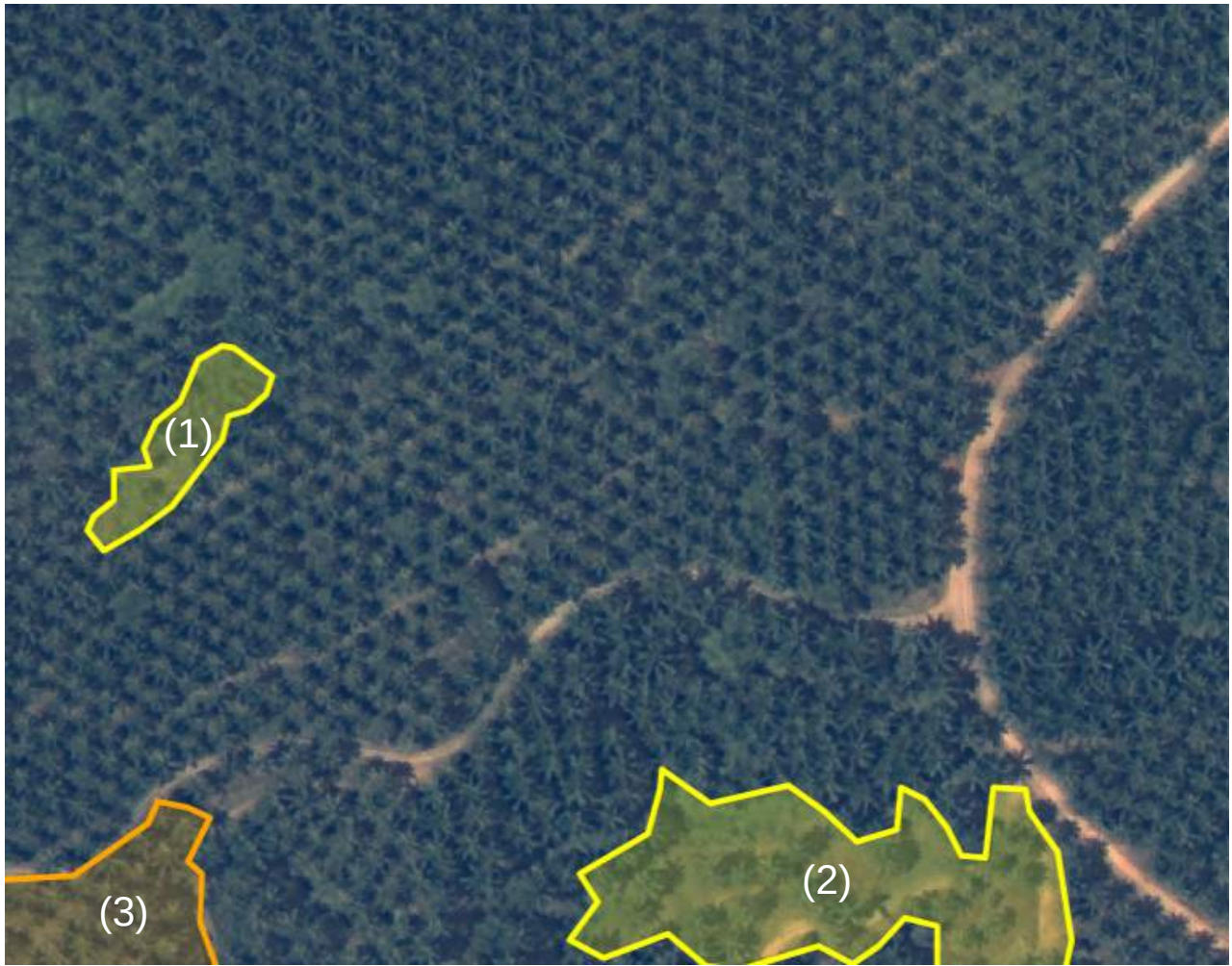


Estate B



Estate C

- 8 total issues detected
- 3 mild issues, 3 medium issues and 1 severe issue
- Estate B has the most issues
- Estate C has no issues



HIGHLIGHTED ISSUES

- (1) Low yield index. Stand per hectare is low (61 stand per hectare).
- (2) Low yield index. Stand per hectare is low (56 stand per hectare).
- (3) Low yield index. Yellowing tree canopies. Severity is medium.



HIGHLIGHTED ISSUES

- (1) Low yield index. Severity is high.
- (2) Low yield index.
- (3) Low yield index. Yellowing tree canopies. Severity is medium.
- (4) Low yield index. Tree canopies are overlapping too much.